



**JetTrac GroupRange™  
Installation Guide  
User Guide**

**Version 1.8  
August 23, 1999**

## Version History

Date	Version	Notes
March 16, 1999	1.0	Initial release. Creates two output files based on a single amount value cutoff.
April 6, 1999	1.2	<ol style="list-style-type: none"> <li>1. Creates three output files based on ranges.</li> <li>2. Inserts job cards.</li> <li>3. Allows for specified dat file names.</li> </ol>
April 26, 1999	1.5	<ol style="list-style-type: none"> <li>1. Increased records to 5000.</li> <li>2. Don't write out job card if length less than 2.</li> <li>3. Add capability for a status page.               <ol style="list-style-type: none"> <li>a. Count records going into each file.</li> <li>b. Added line to ini file for switch.</li> <li>c. Added line to ini file for form name to call for status printing.</li> <li>d. Added new message field to range lines in ini file.</li> <li>e. Add report lines to end of output files.</li> </ol> </li> </ol>
August 22, 1999	1.7	<ol style="list-style-type: none"> <li>1. Added option to skip first line if it is a job card</li> <li>2. Added option for first field to trigger off of both ^field/^global or a literal string.</li> <li>3. Previous versions were hard-wired for three ranges, three only, not 1, 2, 4, or more. Will now accept 1 to 20 ranges.</li> </ol>
August 23, 1999	1.8	Looks for ~ to end ini file.

### **JetTrac GroupRange™ Installation Guide and User Guide August 23, 1999**

Copyright© Pro Technology Automation, Inc., 1999-2004  
All rights reserved.

#### **Trademarks**

JETFORM is a registered trademark and JetForm Central is a trademark of JETFORM Corporation.  
Adobe is a registered trademark and Adobe Central is a trademark of Adobe Systems.

# TABLE OF CONTENTS

1.0	INTRODUCTION .....	4
1.1	PURPOSE .....	4
1.2	BACKGROUND .....	4
1.3	ORGANIZATION OF THIS DOCUMENT.....	4
1.4	TECHNICAL SUPPORT .....	4
1.5	TYPICAL ADOBE CENTRAL JOB FLOW USING JETTRAC GROUPRANGE.....	5
<b>2.0</b>	<b>INSTALLATION AND CONFIGURATION OF JETTRAC GROUPRANGE™ .....</b>	<b>7</b>
2.1	INSTALLING JAVA .....	7
2.2	INSTALLING JETTRAC GROUPRANGE .....	7
2.3	CONFIGURING THE JETTRACGROUPRANGE .INI FILE.....	8
2.4	CREATING A FORM FOR STATUS PAGES .....	9
2.5	CONFIGURING THE TASK IN THE JOB MANAGEMENT DATABASE.....	9
<b>3.0</b>	<b>RUNNING JETTRAC GROUPRANGE™ .....</b>	<b>11</b>
3.1	SUBMITTING TRANSACTION FILES TO ADOBE CENTRAL .....	11
3.2	HOW JETTRAC GROUPRANGE™ IS TRIGGERED .....	11
3.4	ADOBE CENTRAL LOG FILE .....	11

## 1.0 INTRODUCTION

### 1.1 Purpose

This document is a guide to installing, configuring and using the JetTrac GroupRange™ Custom Agent. This document includes detailed instructions for installation and configuration in the Adobe Central Job Management Database.

### 1.2 Background

JetTrac GroupRange™ groups documents found in the Adobe Central field-nominated file by a key field. This field can be any field in each document. JetTrac GroupRange creates a separate output file for each range specified in the ini file and controls each document within a batch in various ways. Each output file can then have its own job card and be placed back in the Adobe Central collector directory. Central can then pick up the files and continue processing them as different and separate jobs that can have different forms and/or different printers. JetTrac GroupRange also generates a status report that can be printed after each job is run and can act as a separator between ranges.

JetTrac GroupRange™ is written in Java so it will run on any platform that supports Java, including, among others, Windows, UNIX, and AS/400. See the *JetTrac GroupRange Installation and User Guide for AS/400* for help on AS/400 installation and configuration.

### 1.3 Organization of this Document

Section 1: Introduction

Section 2: Installation and Configuration Procedures for JetTrac GroupRange™

Section 3: Running JetTrac GroupRange™

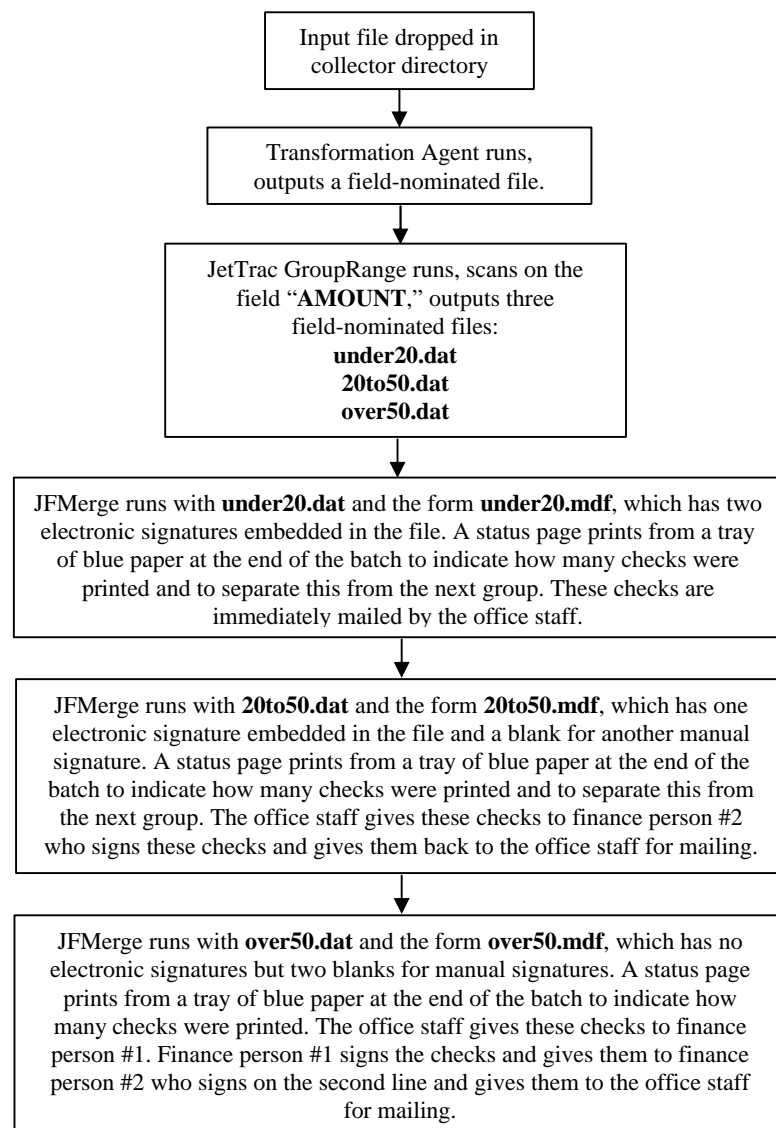
### 1.4 Technical Support

If you need assistance in installing and configuring JetTrac GroupRange™, call Pro Technology Automation, Inc. at 805-527-1248 or email us at [support@protechinc.com](mailto:support@protechinc.com). Please note that the JetTrac GroupRange™ license fee does not cover configuration services and technical support so there may be an additional charge. Please ensure you read these instructions carefully before calling for technical support.

## 1.5 Typical Adobe Central job flow using JetTrac GroupRange

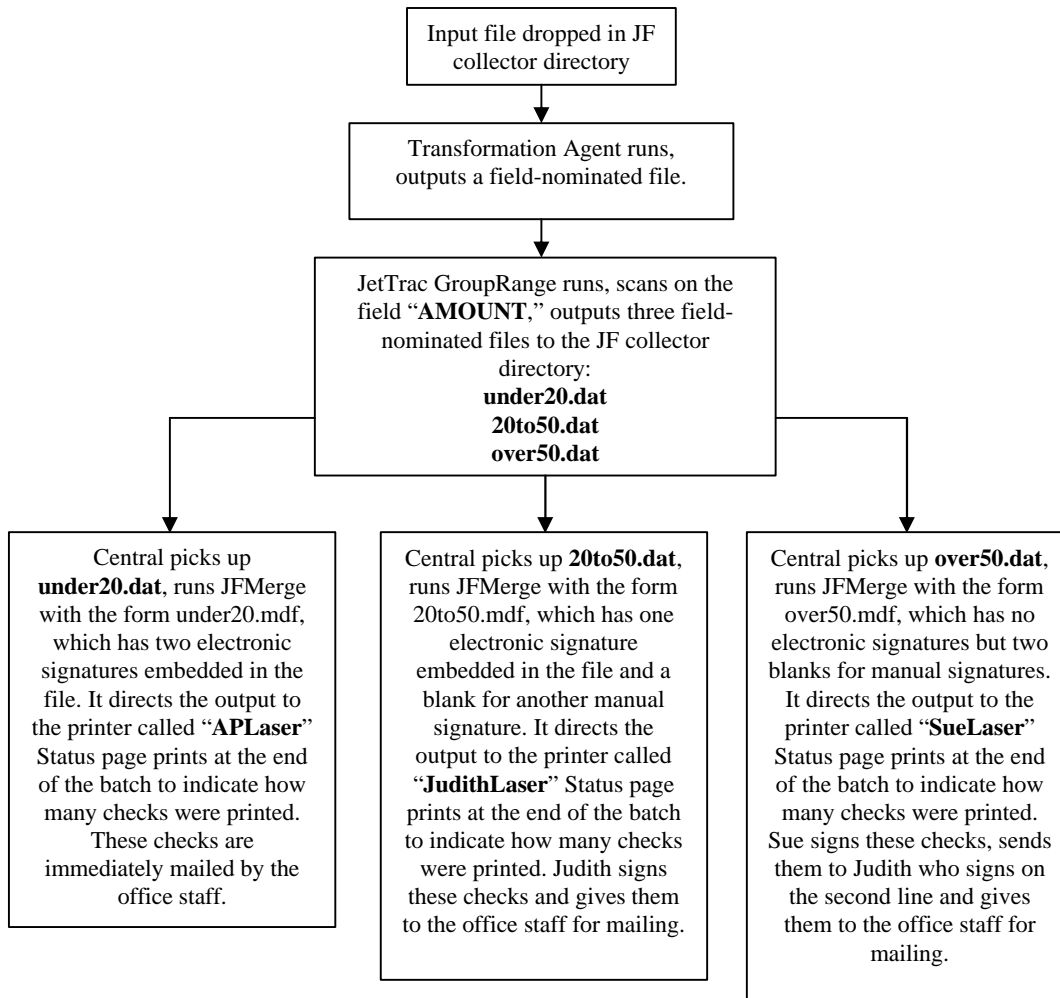
### Example A

This is a diagram showing job flow for a typical AP Check. In this application, the input file has a field called “**AMOUNT**” that JetTrac GroupRange uses to separate the output documents. Checks will be separated based on three ranges: below \$20,000, between \$20,000 and \$50,000, and above \$50,000. In this example, we will use one printer and three different forms, though these could be the same form with the use of Pro Technology’s JetTrac Lookup. The checks will then print grouped by the check amounts specified, with a separator page between the groups. The office staff then distributes part of each stack to the appropriate location.



## Example B

This is a diagram showing job flow for another AP Check. In this application, the input file has a field called “**AMOUNT**” that JetTrac GroupRange uses to separate the output documents. Checks will be separated based on three ranges: below \$20,000, between \$20,000 and \$50,000, and above \$50,000. In this example, we will use three different printers and three different forms, though these could be the same form and with the use of Pro Technology’s JetTrac Lookup. These will print from different printers for security.



## 2.0 INSTALLATION AND CONFIGURATION OF JETTRAC GROUPRANGE™

### 2.1 Installing Java

JetTrac GroupRange is a Java program. This requires that the Java Runtime Environment be installed before JetTrac GroupRange will run.

For Windows install the latest Java Runtime Environment.

For Unix platforms, JRE may already be installed as part of the operating system. If it is not, contact the manufacturer of your server/workstation to find out where to download it.

### 2.2 Installing JetTrac GroupRange

After the JRE is installed, you are ready to proceed to the JetTrac GroupRange files themselves. You will receive an installation EXE file. Simply double click on the EXE file to unzip it and follow the instructions. The following files will be installed:

<u>Folder name</u>	<u>Filename</u>	<u>Description</u>
C:\jfsrvr\CustomAgents\JetTracGroupRange	JetTracGroupRange.class	JetTrac GroupRange executable program file
C:\jfsrvr\CustomAgents\JetTracGroupRange	JetTracGroupRange.ini	JetTrac GroupRange INI file
C:\jfsrvr\CustomAgents\JetTracGroupRange	JetTracGroupRange User Guide.pdf	JetTrac GroupRange User Guide.pdf – this document
C:\jfsrvr\CustomAgents\JetTracGroupRange	JetTracGroupRange.dat	sample input file
C:\jfsrvr\CustomAgents\JetTracGroupRange	RunJetTracGroupRange.bat	batch file to test JetTrac GroupRange with sample file

## 2.3 Configuring the JetTracGroupRange .ini file

There are two main steps to complete the configuration of JetTrac GroupRange. The first is to set up the JetTrac GroupRange.ini file. The second is to set up a task and job step in the Job Management Database in Central Control to call JetTrac GroupRange™ at the correct time.

To set up the INI file, open JetTracGroupRange.ini. A sample looks like this:

```
StartRec
CHECK_TOTAL
Y
^form c:\jfsrvr\CustomAgents\JetTrac GroupRange\Status.mdf
Y
Y
0.0|19999.99|^job under20|c:\jfsrvr\Data\Under20.dat| - Number of checks for Single Page $0 to $19,999.99
20000.00|49999.99|^job 20to50|c:\jfsrvr\Data\20to50.dat| - Number of checks for Single Page $20,000.00 to $49,999.99
50000.00|99999999999.99|^job over50|c:\jfsrvr\Data\Over50.dat| - Number of checks for Single Page $50,000 and over
~~
First field in each document
Field to look at to apply logic to
Y/N flag if ^form Status logic should be applied
String that should be called if above flag=Y
Y to skip first record if first four bytes is ^JOB
N to look for ^field or ^global name or Y to look for exact match
Lines 1-n are specific ranges or the format:
    lower limit|upper limit|job card|filename with path from jfsrvr directory| - Status page description text
```

JetTrac GroupRange reads all of the lines above the double-tilde (~~). This is a code that serves to separate the code lines from the explanations. The rest of the lines are internal documentation to prompt you for what goes on each line.

**Line 1** is the field name of the first field in each record in the input Field Nominated File, or it is the exact text of the first field name of each document. This is switched by **Line 6**. This facilitates using JetTrac GroupRange for applications other than simply print output (i.e. ^fax command used for some fax servers).

**Line 2** is the field name of key value to group on. JetTrac GroupRange will use values found in this field as a trigger to separate documents into various output files.

**Line 3** is the switch to add printing of status/separator pages to the output files. Y for separator pages, N for no separator pages.

**Line 4** is the command to add to the output file to call the separator page form. This is only read if the switch in **Line 3** above is set to “Y”

**Line 5** is the switch to skip the first line of the input file if that line is a job card (begins with ^job). Y for skip, N for process as is.

**Line 6** is the switch for **Line 1** to either search for a ^field or ^global name and then the value of **Line 1** or to look for a literal match of the text found on **Line 1** and not look for a ^field or ^global name. N for look for ^field or ^global and Y to look for exact match.

**Lines 7-n** are the grouping lines. These specify the grouping ranges and output files. Each item is separated by a pipe “|” character. They must have the form of: lower limit|upper limit|job card|filename with path from jfsrvr directory|Status page description text.

## 2.4 Creating a form for status pages

If printing of a status/separator page is desired, then a form must be created for the status to print on. All that is required is one field called “message” that is about the width of the page margin and several lines long. The number of documents in that range followed by the comments specified in the ini file for that range will print in this “message” field. The form should be compiled with the resulting .mdf file being found in the JetTracGroupRange.ini file.

## 2.5 Configuring the task in the Job Management Database

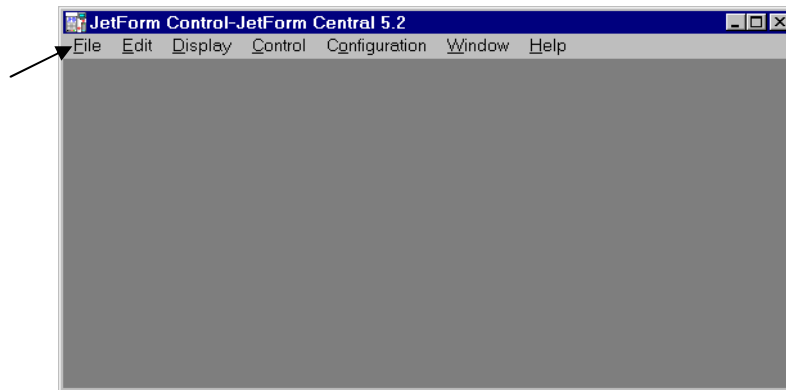
JetTrac GroupRange will take in three files in the command line arguments:

<input file> <ini file> <log file>

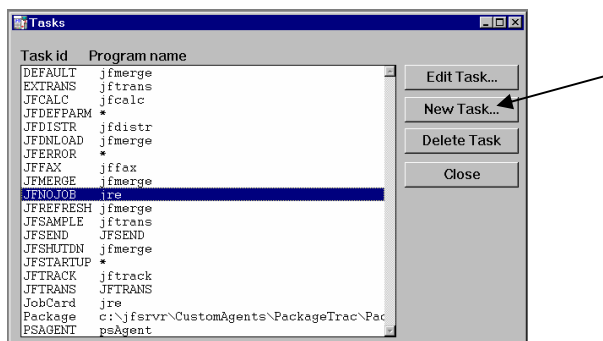
The input file is the Field Nominated File created by the previous job step, which often is the Adobe Central Transformation Agent, though may be another custom agent. The INI file is the file with all the definitions as specified in Section 2.3. The log file is the fully qualified Adobe Central logfile name.

To add the JetTrac GroupRange custom agent in Central Control for Windows platforms:

1. Start Central Control by clicking Start, Programs, Adobe Central, Central Control (may be slightly different for your installation). You will get the following screen:



2. Add a new Task by clicking on File, Job Management Database, Tasks. You will get the following screen:



3. Create a new task by clicking New Task. Set up the Task Definition with the following information:

**Task ID:** Group  
**Program name:** jre  
**Program options:**  
-cp c:\jfsrvr\CustomAgents\JetTracGroupRange JetTracGroupRange @InFile @MDFName @LogFileName  
**Comment:** JetTrac GroupRange Custom Agent by Pro Technology

Note: Adobe Central only allows a maximum of nine characters for task ID names, so we must abbreviate the task ID name here.

4. Click OK to save the Task Definition. Close out of the Task Definition window.
5. Now you must create a job step that calls the JetTrac GroupRange task. This would be one of the job steps in the complete job you are setting up. To set up a new job, from the Central Control main screen click File, Job Management Database, Jobs, then New Job. Define the rest of the steps that as needed. If a JFTrans and a JFMerge Job Step exist, JetTrac GroupRange will always go after JFTrans.
6. From the main screen of Central Control, click File, Job Management Database, Jobs. You will get a list of all jobs you have set up in Adobe Central. We will assume that you already have a job set up and you are adding a Grouping step. Click on the Job that you want to sort, then click “New Step”. The New Job Step window will appear. Following are the fields that you need to fill in:
  - Task ID** – from the drop down list, select Group
  - Input File** – the value that goes here would be a single letter which is the output from the previous job step. If your current job had two steps, JFTRANS and JFMERGE, then the output from JFTRANS was “A”. If you now want to sort this file, then the Input file for JetTrac GroupRange would be A. If you have questions about how this works, contact your Adobe Central support person.
  - Output file** – leave this as \*
  - On Error** – Select S to Stop the Job if there is an error in JetTrac GroupRange
  - Form File** – this field would contain the fully qualified INI filename that you have set up for your application, e.g.  
c:\jfsrvr\CustomAgents\JetTracGroupRange\JetTracGroupRange.ini
  - Preamble file** – This should be \* Delete whatever appears here.
  - Printer Name** – leave it as \*
  - Macro Number** – leave it at 1
  - Load Flag** – leave it at T
  - Comments** – type in a description like “Grouping PO’s by ranges”
7. Close all windows, get back to the main Central Control screen and update the Job Management Database by clicking on Control, Reload Job Management DB. When asked if you want to save changes to the Job Management Database, click **Yes**.

## **3.0 RUNNING JETTRAC GROUPRANGE™**

### **3.1 Submitting transaction files to Adobe Central**

To submit a transaction file to Adobe Central, you place a data file into the Collector Directory. There are a number of ways to do this depending on the platform that you are running Adobe Central. You can FTP the file, use the Central Print Processor, use Named Pipes or simply copy the file.

### **3.2 How JetTrac GroupRange™ is triggered**

As JetTrac GroupRange is set up as one of the steps of a job, whenever a job is triggered that needs to use JetTrac GroupRange, the processing happens automatically.

### **3.4 Adobe Central Log File**

JetTrac GroupRange™ conforms to all Adobe Central requirements as a Custom Agent. It writes a status to the log file and creates the JETFORM.RSP. Here is a sample entry in the log file for a successful run of JetTrac GroupRange:

```
19991014121616 JetTrac GroupRange : processing completed, 5 records  
991014 12:16:16 C:\JFSRVR\jfsrvr.exe: [400]--> returned [0] JetTrac GroupRange : processing completed, 5 records.
```