



**JetTrac Reprint[™]
Installation Guide
User Guide**

**Version 4.62
October 26, 2000**

REVISION HISTORY

Revision Number	Date	Comments
1.0	October 30, 1997	- Initial release of command line version
1.1	March 15, 1998	- Added Reprint Individual option
2.0	July 8, 1998	- Added batch file to run when finished
3.0	November 10, 1998	- Initial release of Windows version
4.0	January 19, 1999	- Added Log file enhancements
4.4	February 4, 1999	- Added Job card option to output file, added path to RepMerge.bat file in INI file
4.62	October 26, 2000	- Add Cancel button to stop search - -

JetTrac Reprint™ User's Guide and Technical Documentation October 26, 2000

Copyright© Pro Technology Automation, Inc., 1997-2003
All rights reserved.

Trademarks

Adobe, JetForm, and Accelio are registered trademarks and JetForm Central and Adobe Central are trademarks of Adobe Systems Corporation.
JetTrac is a trademark of Pro Technology Automation, Inc.

TABLE OF CONTENTS

1.0 OVERVIEW	4
1.1. INPUTS TO JETTRAC REPRINT™.....	4
1.2. JETTRAC REPRINT™ PROCESSING.....	6
1.3. JETTRAC REPRINT™ OPERATING PARAMETERS.....	9
2.0 INSTALLATION INSTRUCTIONS	10
3.0 TESTING JETTRAC REPRINT WITH SAMPLE DATA	11

1.0 Overview

JetTrac Reprint™ was developed to easily automate reprinting of one document, selected documents or a range of documents based on a number of variables that can be customized for each Adobe Central application. JetTrac Reprint is a reprint utility to complement the power of printing batches of documents through Adobe Central.

JetTrac Reprint is a Windows application that is run by the computer operator, systems administrator or “power user” (whoever is processing the Central production printing process) to specify the information needed to extract the data to reprint a portion of a batch of documents. There are three different methods for re-printing from JetTrac Reprint™:

1. Reprint Range. With this method you specify the beginning and ending numbers you want to reprint. The field that will be searched is specified in the INI file (see below for description of INI file)
2. Reprint Sequential. With this method you specify the beginning search value then the number of documents that should be printed starting with the beginning search value.
3. Reprint Individual. With this method you specify individual search values, up to a maximum of 15 values. After entering a search value, tab to the next field to specify the next search number.

1.1. Inputs to JetTrac Reprint™

There are two inputs to JetTrac Reprint: A user selectable data file and an INI file that specifies how processing should occur.

The data file is in the standard Adobe Central Field Nominated Format and is the data file that contains the data for all the documents that printed in the original batch. This data file must be saved during the processing of the original Adobe Central processing in order to be available for reprinting. There are different ways to “archive” (save) the Field Nominated File including a second Transformation Agent (JFTRANS) step (if it is used) or JetTrac Route if you are not using the Transformation Agent.

The Field Nominated File must be sorted with some key value that you use as search criteria in JetTrac Reprint if you use Reprint Range. For example a check file may be sorted by Check Number and that is the search key value that you will use to specify the extraction criteria.

The JetTrac Reprint INI file has nine lines to specify the information needed to reprint documents from a Field Nominated File. Here is a sample INI file:

Line 1	0	Number of records to read prior to first field
Line 2	NAME	First field in each input document
Line 3	CHECK_NUMBER	Search field name
Line 4		Name of Input file (normally left blank)
Line 5	c:\JetTrac\JTReprint\Checks.rep	Name of new Output file
Line 6	Y	Flag if Job Card should be written to output file
Line 7	^Job PrChkReprint	Job command line to write to output file
Line 8	c:\JetTrac\JTReprint\RepMerge.bat	Batch file to run
Line 9	c:\JetTrac\JTReprint	Default path for File Open

Line 1. The number of lines preceding the first ^field or ^global that identifies to JetTrac Reprint the start of a set of records that make up one document (e.g. check, invoice, statements, etc.). The lines preceding the first field name might be a ^FORM command or a ^EJECT or other information important to the Adobe Central process.

Line 2. The name of the first field in the Field Nominated File for each document. (e.g. ^global NAME). You DO NOT specify ^field or ^global, just the name of the field.

Line 3. The name of the field that you want to search on. This must be a field that uniquely identifies a document within a batch, for example CHECK_NUMBER.


Line 4. The fully qualified filename of the input file. This is optional as in the JetTrac Reprint application you can select any file that you wish to process.

Line 5. The fully qualified filename of the new output file.

Line 6. A Y (Yes) or N (No) flag whether the job command line specified in Line 7 should be written to the output file as the first record.

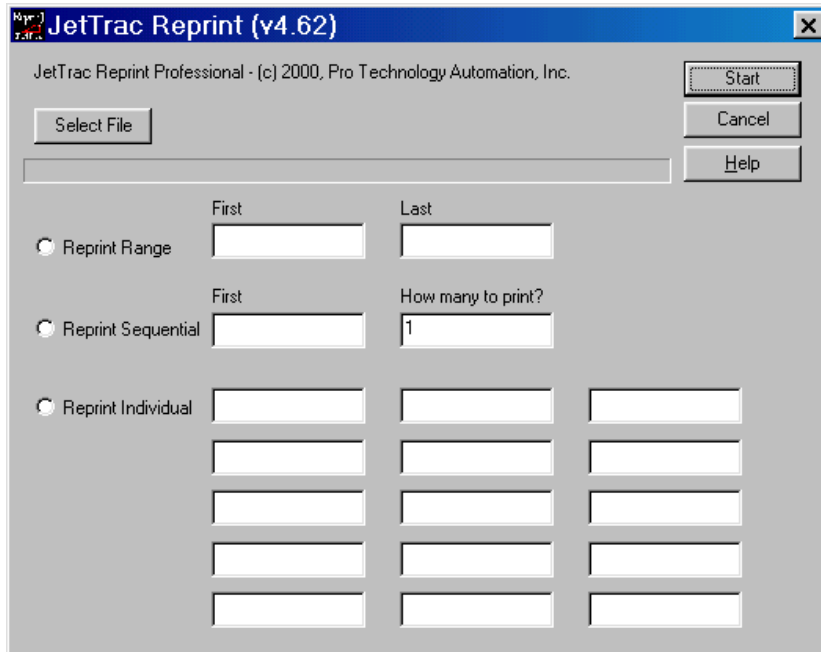
Line 7. The Job Command Line to write to the output file if the flag in Line 6 is Y. This would be used if the output transaction file will be submitted to the Collector Directory for processing by Central. Another option is to run JFMERGE (Print Agent) from the batch file directly from JetTrac Reprint. In this case you would NOT want to write the job name to the output file.

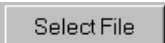
Line 8. Fully qualified filename for the batch file to run when JetTrac Reprint has completed processing.

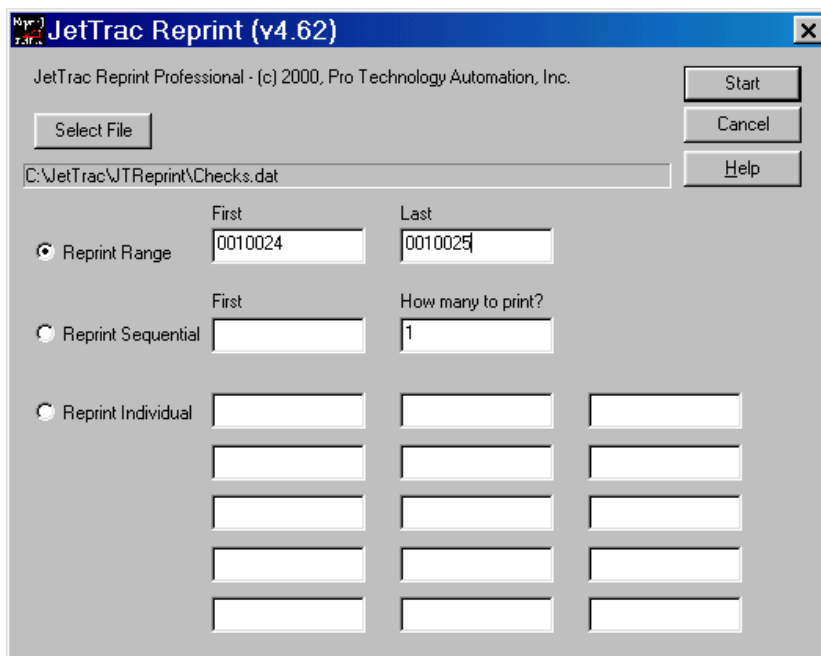
Line 9. Default path for File Open. When you start JetTrac Reprint and click the  button it will automatically display this path.

1.2. JetTrac Reprint™ processing

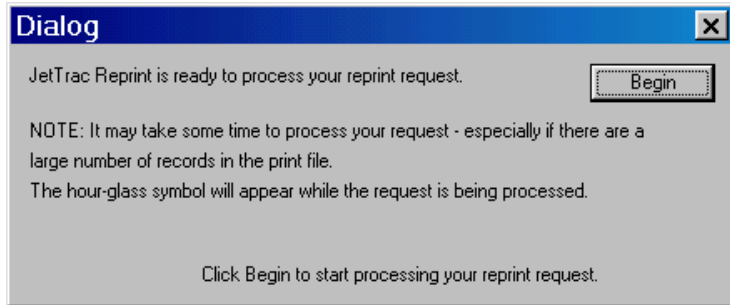
The following screen is displayed when you start JetTrac Reprint. You will have three options in specifying what documents you wish to reprint.



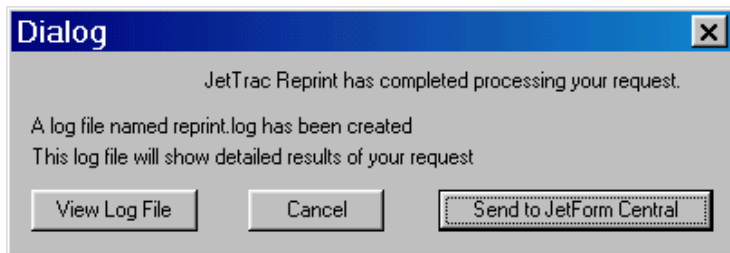
Click on the  button and the standard Windows File Open dialog will come up. Navigate to the Field Nominated File you wish to open and click OK. Select one of the three options and fill in the desired search values. The screen will look like this:




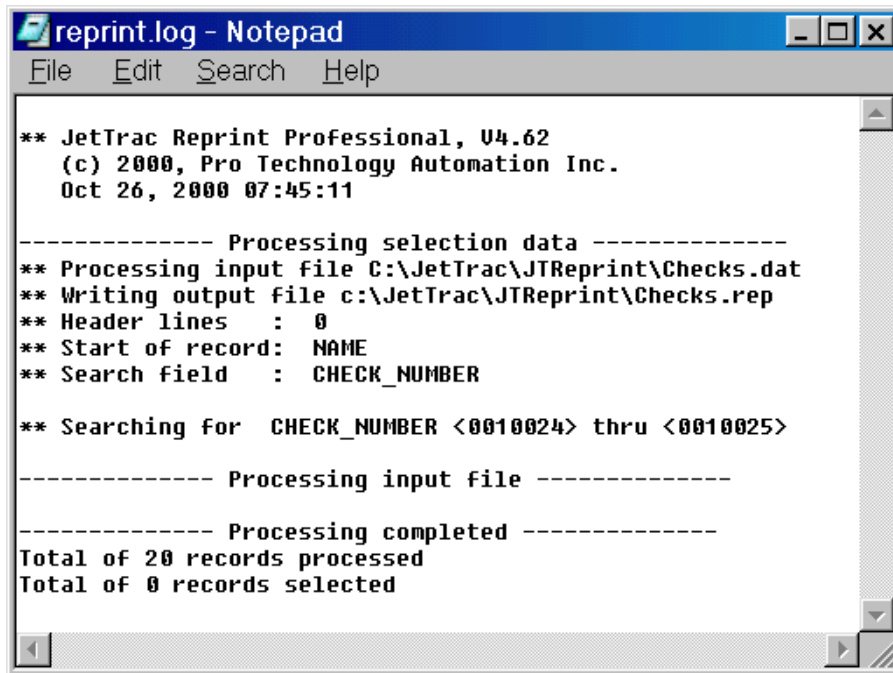
Click the Start button. A message box will appear as follows:



Click the Begin button. After the processing has been completed, the following dialog box appears:



A log file named REPRINT.LOG has been created. This log file will show detailed results of your request". At this point, you would click the  button. Notepad will load and show information about your reprint job. Verify that the proper documents were extracted, then close Notepad.




At this point, if you DO NOT want to process these documents through Adobe Central, press the Cancel button.

The last step is to run the file through Adobe Central to actually print the documents. What we have provided is the ability to either copy the file directly to the Central Collector Directory or to run the Print Agent directly. This is done by running a batch file upon exiting JetTrac Reprint.

You must have already created the batch file and modified the INI file to point to this batch file. The batch file can do one of two options:

1. Run the Print Agent directly by executing a command such as `c:\Adobe\Central\Bin\jfmerge c:\Adobe\Central\forms\Checks.mdf c:\JetTrac\JTReprint\Checks.rep -z\\protechnt\Lexmark`
2. Copy the reprint file to the Adobe Central collector directory by executing a command such as `copy c:\JetTrac\JTReprint\Checks.rep c:\Adobe\Central\Server\data\ReprintChecks.dat`

When you are ready to process the output file you have just created, click the  button. This will run the batch file referenced above. Adobe Central will process the data file according to the instructions you have previously set up in the JMD.

1.3. JetTrac Reprint™ Operating Parameters

It is important to understand how JetTrac Reprint operates so as you are setting up your Reprint Methodology you can take this information into account.

1. In order to reprint Individual Documents, the input Field Nominated File does not have to be sorted. You can specify the key values in any order that you wish. The important thing to note is that the output file that JetTrac Reprint creates will contain the documents in the same ORDER as how they appeared in the input file. For example, if you were reprinting checks based upon a key value of Check Number and your input file did not have checks in a sorted order but appeared in this order:

119
626
124
118
628
120
121
122
627

and you wanted to reprint check numbers 119, 120, 627 and 628, you would enter those four numbers in the “Reprint Individual” boxes. When JetTrac Reprint ran, it would find all four check numbers and write them to the output file, but in this order:

119
628
120
627

If you wanted to sort the checks prior to printing, then you would need to run JetTrac Sort™ which is another of our Custom Agents which does up to three levels of sorting.

2. Because you are now extracting a portion of a Field Nominated File, there is one consideration you must take into account when you set up the “Reprint” job in the Job Management Database. If you have a ^EJECT inbetween each of your documents in the input file, then your JetTrac Reprint output file will probably have a ^EJECT as the last record. What this will do is print one extra form at the end of your batch with any global values that were set previously. Depending on the version of Central that you have, it may or may not be an issue.
3. In order to do reprints of your documents, you must retain the Field Nominated File that is created as a temporary file as part of your original Central Job. There are a couple ways to do this so consult with whoever originally developed your Central application in order to determine the best way to do this.

2.0 Installation Instructions

Installation instructions

If you received JetTrac Reprint via email here are the instructions for downloading the file and printing the installation instructions:

1. Attached is a zip file called JetTrac Reprint installation files.zip that contains the JetTrac Reprint software, sample files and documentation.

Here are the files enclosed within the EXE file:

<u>Filename</u>	<u>Description</u>
JTReprint.exe	JetTrac Reprint executable program
Checks.ini	Sample INI file
JetTrac Reprint User Guide.doc	This document
RepMerge.bat	Sample batch file to run JFMERGE directly
Checks.dat	Sample data file

Note: If you test with the Checks.dat file, the range of check numbers is 0010021 through 0010040.

2. Create a new folder to place the files. This can be any folder name in any drive that you wish. If you do not have a preference we recommend that it be c:\JetTrac\JTReprint.
3. Copy the zip file to this new folder and unzip the files. Verify that five files were unzipped to this folder.
4. Modify the Checks.ini file for your application needs and name the file anything that you want, e.g. Payroll.ini or APCheck.ini. Place the INI file in the new folder you created.
5. Create a shortcut to JetTrac Reprint with the INI file you just created. On your desktop, right click your mouse button and click New, then Shortcut. Click the browse button and navigate to where the JTReprint.exe file is located. Click on JTReprint.exe and click Open. Click the Next button. Type a name for the shortcut such as "Reprint Payroll Checks", then click Finish.
6. Now we need to point to the INI file. On the Desktop, right mouse click on the icon you just created and click Properties. In the "Target" field, after the fully qualified filename of the JTReprint.exe type a space then the fully qualified filename of the INI file, then click OK.

3.0 Testing JetTrac Reprint with sample data

You are now ready to try out JetTrac Reprint. Included with this installation is a sample file that you can test with. The sample data file contains a number of checks, with check numbers ranging from 0010021 to 0010040. The quickest way to test (without having to set up a shortcut) is in Windows Explorer to click on the Checks.ini and drag it onto the JTRReprint.exe file.

Here is a QuickStart Guide to looking at the various options in the sample data included:

1. Go into JetTrac Reprint, select the Checks.dat file and click on "Reprint Range". Enter 0010028 in the "First" box and 0010033 in the "Last" box. Click OK, then Begin. After the processing has completed, click on "View Log File". It will show you that 6 checks were selected and written to the file c:\JetTrac\JTRReprint\Checks.rep. Click OK to exit the program and you will see a DOS box come up briefly while it is executing whatever commands were in the RepMerge.bat file. To verify that the proper records were written to the output file, go into Explorer, find Checks.rep, open it up and scroll through the records, noting the CHECK_NUMBER values.
2. Go back into JetTrac Reprint, select Checks.dat and click on "Reprint Sequential". Enter 0010035 in the "First" box and 3 in the "How many to print?" box. Click OK, then Begin. After the processing has completed, click on "View Log File". It will show you that 3 checks were selected and written to the output file.
3. Go back into JetTrac Reprint, select Checks.dat and click on "Reprint Individual". Click in the first blank box and enter 0010021, press Tab, enter 0010027, press Tab, enter 0010039. Click OK, then Begin. After the processing has completed, click on "View Log File". It will show you that 3 checks were selected and written to the output file.

Now create the INI file for your own application and test it out.